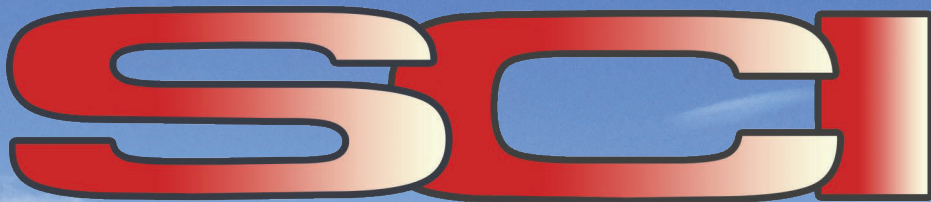


**SMITH & COMPANY, INC.**



**Engineering Contractor**



**EARTHWORK | UTILITY | CONCRETE | ASPHALT**

**THIS COMPANY WAS BUILT FROM JUST TWO  
PIECES OF EQUIPMENT ALMOST 40 YEARS AGO.**

Smith & Company, Inc. was founded in South Florida in 1983 by Stephen W. Smith.

As a native of South Florida, Smith recognized a need for quality, professional site development and highway construction engineering to support the massive development taking place throughout the state.

The Smith venture began with just two pieces of machinery and a solid commitment to provide the most professional land engineering and infrastructure services available in the industry.

The Machinery has changed, the commitment has not.



**THE RIGHT DIRECTION FOR  
QUALITY SITE DEVELOPMENT  
AND HIGHWAY CONSTRUCTION**

**(772) 777-2662**

[www.smithcoinc.net](http://www.smithcoinc.net)

SMITH & COMPANY, INC.  
**SCI**  
Engineering Contractor



## Stephen W. Smith

Steve Smith began his career in the early 1970's doing small asphalt patchwork projects as a subcontractor. In 1983, he founded Smith & Company.

Through hard work, determination, and experienced, capable employees, the company steadily grew.

Today, Smith & Company employs highly trained and dedicated individuals, and maintains an extensive fleet of state-of-the-art equipment.

As an industry leader, Smith & Company has gained a reputation for being able to undertake large, fast track projects and complete them on time and within budget. This is done through the use of expert scheduling and innovative construction methods combined with a skilled work force and an experienced, consistent management team.

SMITH & COMPANY, INC.

**SCI**  
Engineering Contractor

# PROJECTS OF ALL SCOPES

Smith & Company grew to become an industry leader by providing services to clients with varying levels of need. To have the resources available for both massive and small scope projects, the company maintains a large experienced staff and the best equipment in the industry.

To effectively manage resources and quality control, Smith & Company has specific divisions dedicated to each aspect of highway development and highway construction. These divisions allow for Smith & Company to complete projects of any size without the need to hire third party contractors.

While large projects require the services of all the divisions of Smith & Company, smaller projects may require only one or two specific areas of a service to keep costs down. From projects of large magnitude to smaller assignments, Smith & Company has proven resources and capabilities.



# DIVISIONS

## EARTHWORKS

The Earthwork Division is responsible for the complete preparation of land for development. This provides all services necessary to begin infrastructure construction and vertical building. Through processes such as land clearing, de-mucking, blasting, excavating, loading, hauling, spreading, and compacting, Smith & Company transforms raw land into a usable piece of real estate, commercial or residential.

## UTILITY

The Utility Division has expertise in the planning and construction of all sewer, drainage, and water main facilities. Using proven techniques for installations, Smith & Company lays the support structures for development. A high degree of technical know-how and depth of experienced personnel enables this division to install their work just ahead of the roadbuilding operation, thus saving valuable time in completing their client's project.

## ROADWORK

The Roadway Division has experts who carve new roads to support the development or expand and renovate the current road and highway systems. As a full-service provider, Smith & Company works with the client to handle all their needs from development and implementation of traffic plans, clearing, preparation and stabilization of sub-grade, compacting and finishing road-base, asphalt paving, and the final signing and striping.

## CONCRETE

The Concrete Division creates all the concrete structures to support the development of particular projects. This division installs sidewalks, walkways, roadway curbing, and barrier walls in both new and existing projects.

The complete scope of services available through Smith & Company has been used in many large scale projects including Weston, Pembroke Falls and major traffic arteries in Florida such as portions of Interstate 4 in Central Florida, Jog Road and Pines Boulevard in South Florida.

## PEMBROKE FALLS

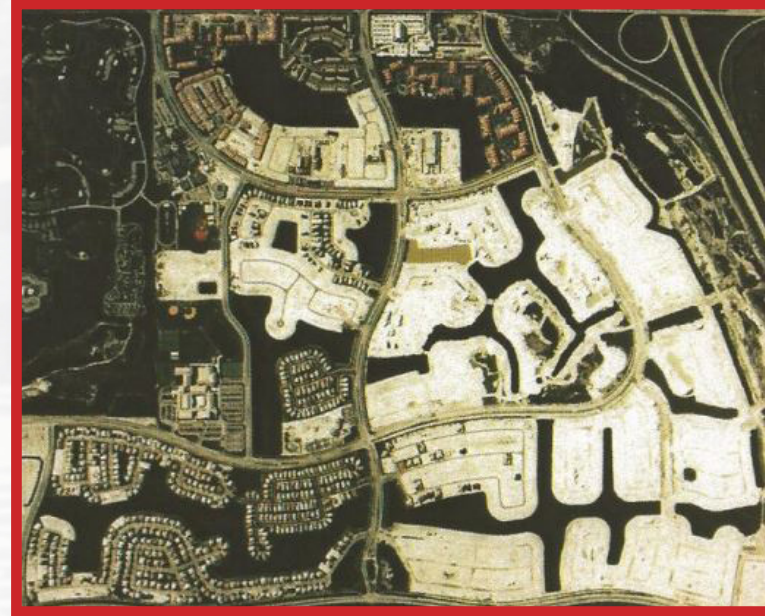
A 1500-acre residential development was transformed from swamp land to an upscale community of over 2085 private residencies. Two apartment complexes, two schools and numerous commercial establishments. Over 15 million cubic yards of material were excavated to form the foundation of this \$75,000,000 site development project. All earthwork, roadways, concrete and underground utilities were done by SCI forces.

## I-4 PROJECT

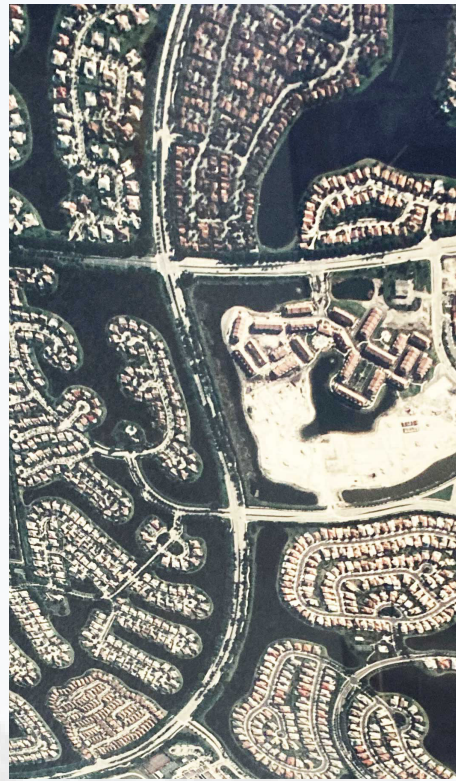
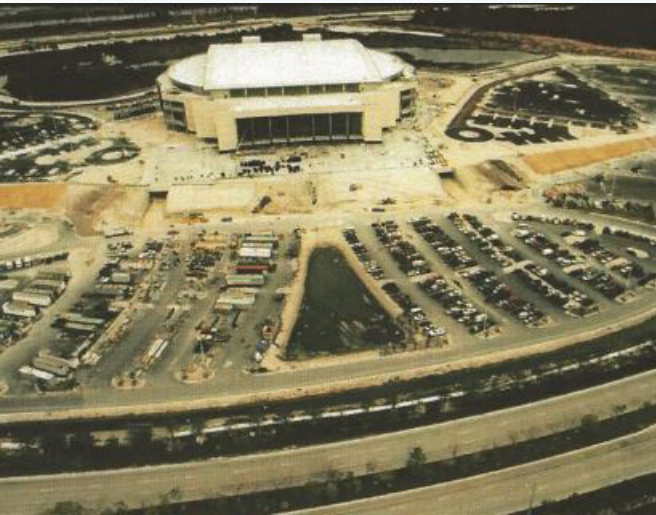
This three mile, \$48,000,000 replacement of I-4 includes two bridges, relocation and replacement of both east/west bound lanes with concrete pavement, curbing, barrier wall, water main replacement and storm drainage. Smith & Company, Inc., partnering with Florida Department of Transportation, completed this project in an accelerated schedule 360 days.

## WESTON

Over 25 years ago the idea of a new city in West Broward was conceived on 10,000 acres of the everglades by the Arvida Corporation. During those years, SCI has developed over 50% of what is known as the City of Weston. This work has included two golf courses, miles of roadway, curbing, clearing for 30,000,000 cubic yards of lake excavation, muck removal and embankment.



# A wealth of experience has provided Smith & Company with the ability to submit comprehensive, competitive project bids.



Smith & Company's precise bids begin with research. The cost of work required to prepare land for development varies with each property. Surface and underlying conditions dictate the resources required to properly engineer the parcel.

The company produces accurate and competent solutions to each project's requirements by utilizing the latest technology provided by the HCSS HeavyBid Estimating Software.

"We don't lock in to an estimate lightly", said Smith. "We go through the particulars again and again until we're satisfied that the estimate is solid"

Smith & Company will conduct an in-depth analysis of the land condition, material and water to best determine the current condition of the property. Bids are then compiled to reflect costs associated with changing the property from its current condition to the client's vision.

As a family-owned business, Smith & Company has particular pride in their work and attention to detail.

"We're known in the industry to do whatever it takes to get a job done ahead of schedule," said Smith. "We have the finest equipment and the most experienced personnel to meet all project requirements."

The company management team enjoys many years of combined construction experience in Florida which it draws upon for every project. From providing comprehensive competitive bids to finishing the last shovel of dirt, Smith & Company's personnel remain committed.

SMITH & COMPANY IS FULLY LICENSED, BONDED AND INSURED.

"The Broward County Arena was a fast track project with a very demanding schedule. Smith and Company was responsible for all site-work activities ranging from underground utilities to the asphalt paving (including curbing and striping). They brought a professional attitude to the table, staffed the job with a very knowledgeable management team, and performed all work within the confines of the Projects Schedule"

**Ron Dunn**  
Vice President  
Centex Rooney

"I'm impressed with the way Smith and Company aggressively approached this fast track project. They have the resources necessary at the right time to keep a very tight construction schedule right on target."

**Ralph C. Mervin**  
Director of Operations  
District 1  
Florida Dept. of  
Transportation  
1-4 Expansion

"Smith & Company was particularly chosen by our company to accomplish earthwork, sewer, paving and drainage. All these functions have been effectively coordinated in house and their personnel have always been extremely responsive to our needs"

**William Gardiner**  
Vice President  
Engle Homes/Pembroke

"Smith & Company has played an integral part in creating one of the nation's most recognizable planned communities, Weston, developed by St. Joe/Arvida. Through the spirit of fostering team relationships through our Contractor base, such as Smith & Company, we have continually out-paced both economically and technically most competition in the construction industry."

**Donald Mears**  
V.P. General Management  
St. Joe/Arvida



"AWARD WINNING TEAM"

SMITH & COMPANY, INC.  
**SCI**  
Engineering Contractor

[www.smithcoinc.net](http://www.smithcoinc.net)

Tel: (772) 777-2662 Fax: (772) 777-2663

1940 SE Port St. Lucie Blvd., Port Saint Lucie, FL 34952